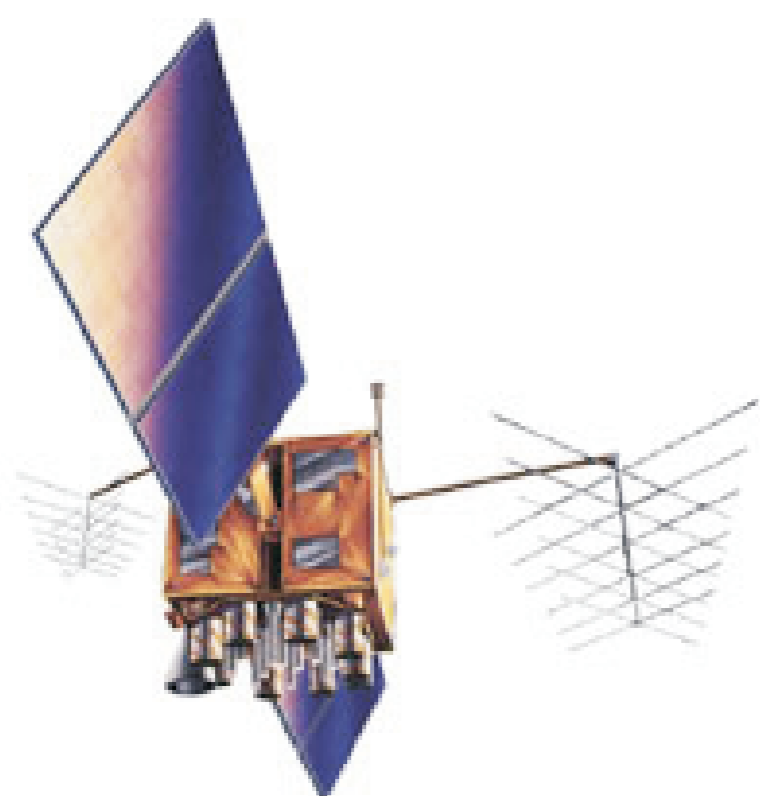


Knowledge Intensive Fusion For Situational Awareness.

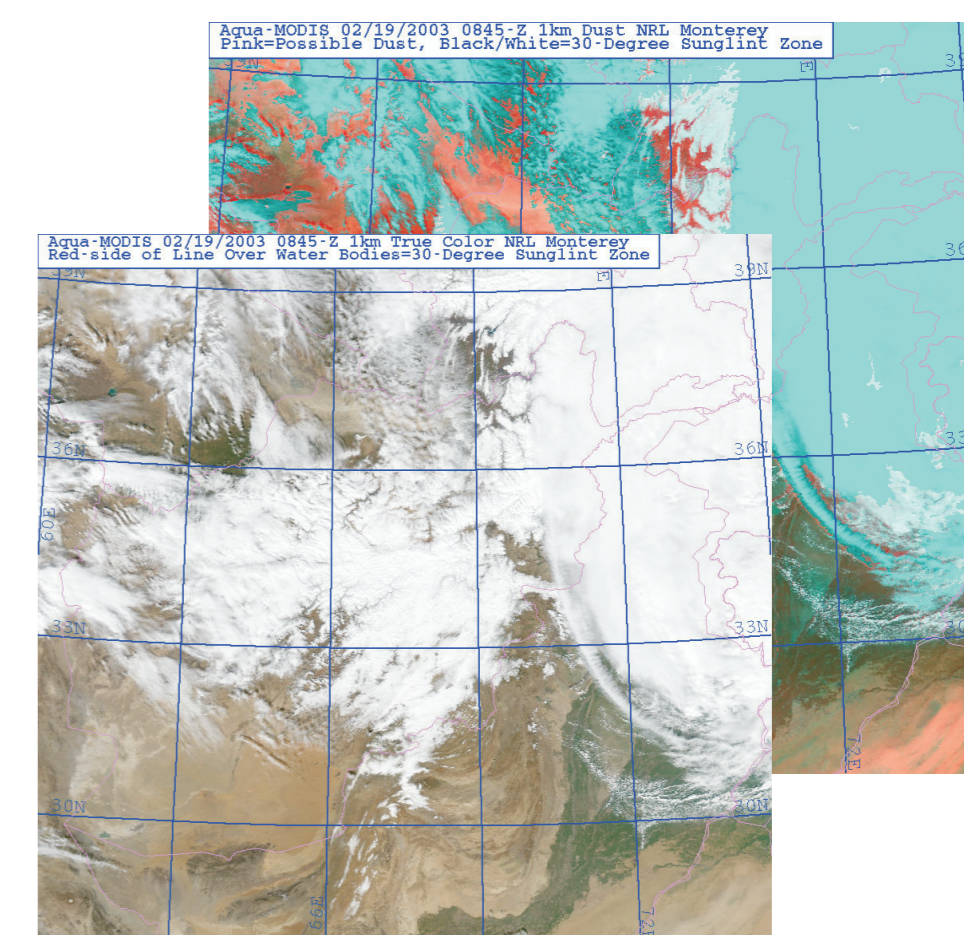
Nigel Shadbolt, Leslie Carr, monica schraefel



Intelligence, Agents, Multimedia Group,
The University of Southampton



A knowledge-guided environment to accomplish intelligent information...



PROCESSING

Using the knowledge models to reason over the incoming streams of information, generating new knowledge, summaries, predictions, guidance, and direct attention.



FUSION

Using formal knowledge models (inc ontologies) of the sources, user roles and tasks to perform the aggregation task.



INTERACTION

Supporting effective visualisation of and interaction with diverse information sources as a decision-making aid

